

State of California  
County of Santa Barbara

See de Juan Cordue being

dearly known of these and says that  
he is a citizen of the State of Ohio and  
that under the provisions of an act  
of the Legislature of <sup>the State</sup> said official 20<sup>th</sup>  
a. d. 1850 and of the acts amending  
them and Supplementing them, he  
is being the moral of manufacturing and  
operating of the steam engines in  
lands, he has taken possession of a  
certain tract of land part of the  
the domain of the State of Ohio, situated  
in the County and State of Nevada, and  
more fully described as follows to wit:  
A tract of land situated in the West  
slope of Santa Barbara Cañon, about  
five miles from the State of Ohio Valley;  
bounded, as follows to wit. Commencing  
at the 3<sup>d</sup> station of a survey made  
April 1. 1865 for Joe Prochada (by E.  
Madison) being the 1<sup>st</sup> station of a survey  
made April 19. 1865 for J. de B. White  
and thence running 1<sup>st</sup> N. 20<sup>o</sup> W.  
40.89 chains 2<sup>d</sup> S. 80<sup>o</sup> W. 40.00 chains  
3<sup>d</sup> S. 22<sup>o</sup> W. 40.89 chains 4<sup>th</sup> N. 50<sup>o</sup> E.  
40.00 chains to the beginning containing  
160 acres And applicant further claims  
that he holds no other claim under  
the provisions of said act, that his  
said lands do not embrace more than  
one hundred and sixty acres, and  
that to the best of his knowledge and





Surveyed April 17, 1865 for

Leida J. Sanders - West of Lower Sanitarium

on the west slope of Santa Pata Cañon  
about five miles from Santa Clara  
valley; Benavente; as follows to wit;

Commencing at the 34<sup>th</sup> station of a

survey made about 1855 for John

Mackintosh (by G. W. Stearns) being the 14<sup>th</sup>

station of a survey made April 17, 1865-

for J. de la S. Shark and thence running,

14<sup>th</sup>, N 22° 00' W 40.89 chains, 47, 180° 00' W

40.00 chains, 34<sup>th</sup>, N 22° 00' E 40.89 chains,

48<sup>th</sup>, N 80° 00' E 40.00 chains to the beginning containing 160 acres

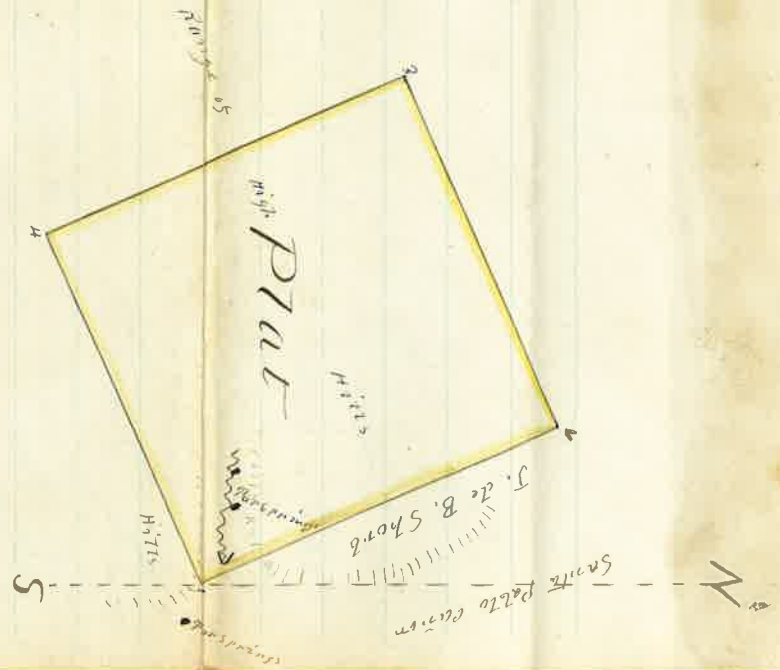
run by the meridian - Benavente N 71° 00' E 60'

Platm made of 20 chains to one inch

This is to certify that the above Plat and Special notes are correct

Me m o r a n d u m Benigno Stearns

April 22, 1865



Surveyor

said land is not claimed by any  
legal claimant

Dated this 24<sup>th</sup> day of April A.D. 1865  
I am and subscribed  
to before me on this 24<sup>th</sup> day of April A.D. 1865  
day of April A.D. 1865  
D. A. Thompson



State of Wisconsin  
County of Clark

I, D. A. Thompson, Co. Recorder in and  
County of Clark, do hereby certify that the within claim is  
recorded in Book A of Preemption Claims on page 107 of the  
Records of the Revenue Office of said County.

Witness my hand and office seal on this  
25 day of April 1865

Joseph J. Adams  
Secy to J. Cordes

107

Office for recording  
25<sup>th</sup> day of April,  
A.D. 1865 at 15  
P.M. J. D. Adams  
County Recorder